

Lead Service Line Replacement Program

Passaic Valley Water Commission (PVWC) will be replacing lead and galvanized steel service lines in Clifton, Paterson, Passaic, and Prospect Park at **no cost** to the homeowner. The steps below describe the process of getting your lead service line replaced.

Lead and galvanized pipe should be replaced to minimize lead exposure and maintain good water quality

1. PVWC or PVWC's contractor will schedule a day where they will come into your home and inspect the material of the customer-owned side of the service line, which is located on your property.



2. They will need to see the pipe that enters the water meter, which is probably in your basement.



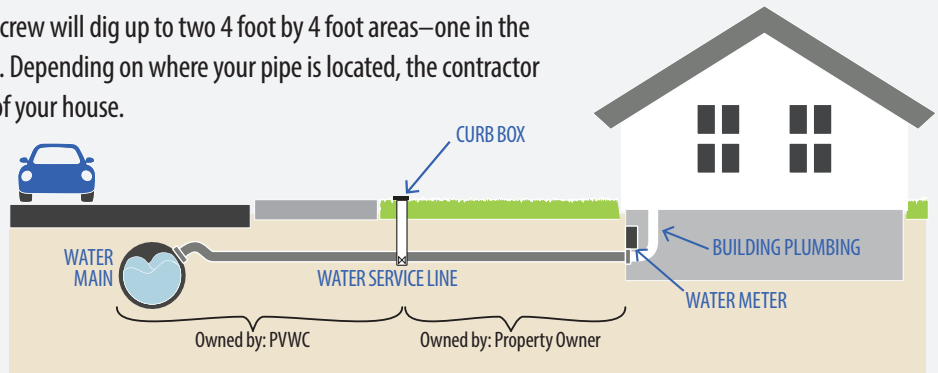
3. To see the material of the PVWC-owned side of the service line, a contractor will dig a small test hole in the front of your home, near the side walk. The hole will be temporarily patched, and restored at a later date.



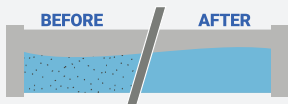
4. If the service line material is lead or galvanized steel at either location, you are eligible to get your lead service line replaced for **FREE**.

5. To get to the pipes underground, the contractor and crew will dig up to two 4 foot by 4 foot areas—one in the street and one at the curb in the area near the test hole. Depending on where your pipe is located, the contractor may also have to dig a small hole near the foundation of your house.

6. The contractor will replace the old service line with a new copper service line. The new service line will be connected to the water main in the street at one end and your house plumbing at the other end.



7. The contractor tests the new pipe and runs water through it to flush out debris and lead particles.



8. The contractor will temporarily patch holes in the yard, sidewalk and street to allow for settling. The holes in the yard will then be restored to pre-work conditions with seeding, concrete, or paving.



Temporary asphalt repair patch in street and/or sidewalk after service line replacement.



Permanent sidewalk repair at the curb stop.



Temporary backfilled holes in your yard are filled with soil and left to settle.



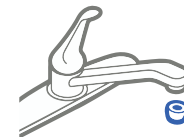
Final yard seeding occurs 3-4 months after the initial patch, weather and season permitting. Water seeds for best results!

9. Once the pipe is replaced and water is back on, turn on all the cold faucets in your building. Start with the faucet at the lowest level and work your way up to the highest level. **This will flush all of the water pipes in your building.**



After 30 minutes of flushing the cold water, shut off faucets, starting at the highest point and working your way down.

REMEMBER: Always use cold water from the tap for drinking, cooking, and preparing baby formula



FAUCET AERATOR

After flushing, remove faucet aerators and clean out any particles. The aerator is usually at the tip of the faucet and can be screwed off to clean.

LEAD SERVICE LINE LOOK UP: Find out if you have a lead service line bringing water into your home by visiting www.pvwc.com/LeadLookUp.

QUESTIONS: ☎ 973-340-4300 ✉ leadfree@pvwc.com

Check the PVWC website for updates on the lead service line replacement program. www.pvwcleadserviceline.com